

GROOVED PIPING PRODUCTS



Grooved Piping Products are designed for use in fire protection systems and eliminate the need for screwed, welded, or flanged connections. They provide several economic advantages for connecting pipe and fittings when compared to welded or flanged systems. Grooved Piping Products also make field modifications easy, as couplings and fittings can be rotated, added, changed, or eliminated as necessary. Available in a wide range of sizes and configurations. Tyco makes a full line of grooved domestic and import products for fire protection.

FEATURES:

- *Easy Field Modifications*
- *Quickly Joining Steel Pipe without Welding*
- *Rigid Connections for Long Runs & Risers*
- *Retro-fitting & System Repair*
- *Dampening Noise & Vibration Transmission*

PIPING & ELECTRICAL DEVICES

GROOVED PIPING PRODUCTS

FIGURE 577

Rigid Coupling

- Available sizes: 1" (DN25) through 12" (DN300)
- Specifically designed to provide rigidity in grooved piping systems
- Capable of pressures up to 350 psig (2413 kPa) depending on pipe size and wall thickness
- Standard Grade A EPDMA pre-lubricated gasket, -30°F to 150°F (-34°C to 66°C)

TECH DATA TFP1854

- Also available with tri-seal Grade E gasket for dry pipe fire protection systems, vacuum systems, and freezer applications
- Listings and Approvals: UL, ULC, FM, VdS, & LPCB



FIGURE 705

Flexible Coupling

- Available sizes: 1¼" (DN32) through 12" (DN300)
- Provides the needed flexibility to accommodate differential movement
- Capable of pressures up to 300 psig (2068 kPa) depending on pipe size and wall thickness
- Standard Grade A pre-lubed gasket

TECH DATA TFP1820

- Also available with tri-seal Grade E gasket for dry pipe fire protection systems, vacuum systems, and freezer applications
- Listings and Approvals: UL, ULC, FM, VdS, & LPCB



FIGURE 716

Flexible Reducing Coupling

- Available sizes: 2" x 1½" (DN50 x DN40) through 8" x 6" (DN200 x DN150)
- Allows easy transition between two different pipe sizes and replaces two couplings and a reducing fitting
- Capable of pressures up to 350 psig (2413 kPa) depending on pipe size and wall thickness

TECH DATA TFP1830

- Faster and easier than threading, welding or using flanges
- Listings and Approvals: UL, ULC, FM, VdS, & LPCB



FIGURE 707

Flexible Coupling

- Available sizes: 1½" x 12" (DN40 x DN300)
- Provides a dependable method of joining pipe and is suitable for use in a variety of applications
- Capable of pressures up to 500 psig (3447 kPa) depending on pipe size and wall thickness

TECH DATA TFP1840

- Listings and Approvals: UL, ULC, FM, VdS, & LPCB



FIGURE 71

Flange Adapter

- Available sizes: 2" (DN50) through 12" (DN300)
- Allows a direct transition from flanged components to a grooved piping system
- Bolt patterns conform to ANSI Class 125 and 150 standards

TECH DATA TFP1880



FIGURE 702

Mechanical Outlet Coupling

- The GRINNELL Figure 702 is a pipe joining coupling with an integral reducing outlet, eliminating the need for a mechanical tee or a reducing tee and associated couplings
- Run sizes from 1-1/2" to 6" (DN40 to DN150)
- Maximum Pressure 500 psi (34,5 bar)
- The Figure 702 is available with grooved, male threaded, or female threaded outlets.

TECH DATA Contact Tyco for details

- The Figure 702 can be used for vacuum service up to 10 inHg (254 mmHg) that can occur when the system is drained.



FIGURE 730

Mechanical Tees & Crosses

- Threaded or grooved outlet
- May be used for any tee connection where a threaded or grooved outlet is needed
- Can be configured as a cross when necessary

TECH DATA TFP1860



ADACAP®

- Used to install the last sprinkler on grooved branch line piping or as a drain fitting
- End-of-the-line sprinkler fittings eliminate the need for an end cap and female outlet
- Can be turned down for end of line drain
- Available in 1/2", 3/4" and 1" outlets

TECH DATA TFP1810



Always refer to the product's Technical Data Sheet for a complete description of all Listing and Approval criteria, design parameters, installation instructions, care and maintenance guidelines, and our limited warranty.

PIPING & ELECTRICAL DEVICES

GROOVED PIPING PRODUCTS

GROOVED FITTINGS

Elbows, Tees, Caps and Crosses

- Provide an economical and efficient method of changing direction, adding an outlet, reducing or capping grooved piping systems
- Cast grooved fittings provide full flow characteristics
- Full back stop behind the groove to ensure proper coupling engagement and rigidity
- Wide range of grooved fabricated fittings also available
- Full flow standard end-to-end dimensions

TECH DATA

TFP1810 & TFP1815

- Fully listed and approved for fire protection use
- 300 psi pressure rated
- 90° elbows and tees are also available in the "short pattern" style
- Available painted or galvanized finish

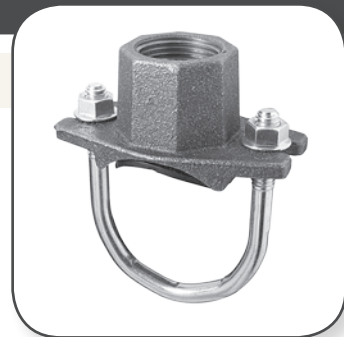


40-5 STRAP

- Sprinkler Outlet
- Run sizes in 1-1/4" to 2-1/2" outlets (DN32 to DN65)

TECH DATA

Contact Tyco for details



ROLL GROOVERS

- Large assortment of roll groovers available
- Automatic and portable roll groovers for 1" through 24" pipe

TECH DATA

Contact Tyco for details

